

# SHOPFLOOR & INTRALOGISTICS

PRODUCT OVERVIEW



**FATH**

# SHOPFLOOR & INTRALOGISTICS

The various FATH solutions for Shopfloor & Intralogistics have one thing in common: They bring more productivity to your industrial workflows – fast and flexible, easy to implement and use.

FATH products for lean production optimize the entire shopfloor management. You can achieve sensible automation of intralogistics with the modular sorting system with the flowsort brand. The innovative components and subsystems also offer maximum flexibility for construction of roller conveyors and belt conveyors.

## How do you achieve greater efficiency in shopfloor & intralogistics?

It is often a question of the sensible combination of different products and partial solutions, which work together in such a way that they perfectly meet your complex requirements. Or the application of new ideas to solve a specific challenge in a surprisingly simple way using standard products. That's why we have experienced experts.

### **With expert knowledge on more added value on the shopfloor**

Individual advice on material supply, material flow and visualization from lean expert Michael Honisch.

*„We support you with specially developed LEAN products that specifically meet the everyday requirements of our customers. Work processes on the store floor and in intralogistics can be made even safer and more efficient with simple measures. How do we do this? I will advise you personally – also at your premises after viewing the real-life scenarios, and, depending on the application, in cooperation with FATH partners such as AGILOX.“*

**Feel free to contact me: [michael.honisch@fath24.com](mailto:michael.honisch@fath24.com)**



# FATH VISUAL BOARDS & ACCESSORIES

Mobile shopfloor management



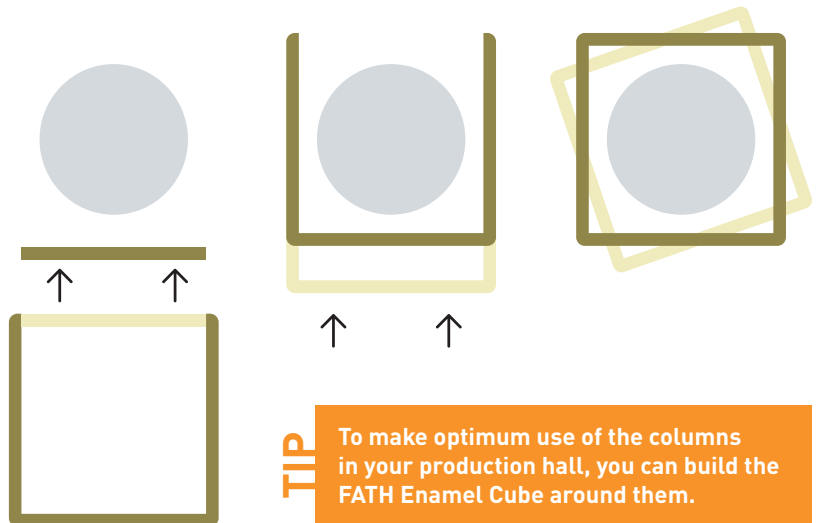
## MAKING THE MOST OF COLUMNS IN PRODUCTION HALLS!

The enameled surfaces of FATH Visual Boards are scratch resistant, extremely durable, and protected against marker residues. Since the metallic surface is also magnetic, the whiteboard becomes a magnetic board.

Clever: The mobile Enamel Cube offers an enormous amount of space on a small footprint - it is also perfect to use on supporting columns.

More information on all  
FATH Visual Boards:

[visual-board.fath24.com](http://visual-board.fath24.com)



**TIP**

To make optimum use of the columns in your production hall, you can build the FATH Enamel Cube around them.

# FLOOR MARKINGS

The color code guiding system

The self-adhesive FATH Floor Markings are well-suited to virtually any industrial floor and can be driven on immediately. FATH Floor Marking Tapes are form-stable. The FATH pre-cut floor windows are available in a wide range of DIN formats FATH floor shapes in L/T/I and foot format and the FATH floor signs with pictograms according to ASR standard, you can implement visualization quickly and securely as required.

The FATH experts for lean production will advise you personally on your individual color coding system.

## MONOCHROME FLOOR MARKINGS

### **Yellow**

Paths for use by vehicles and pedestrians

### **Red**

Scrap, blocked stock or defective material

### **Blue**

Materials for further processing

### **Green**

Finished products and goods

## TWO-COLOR FLOOR MARKINGS

### **White / Red**

Fire-extinguishing system and fire-fighting equipment, highly flammable materials and surfaces, non-smoking area

### **Black / Yellow**

Hazard area, height restrictions, width restrictions, radioactive materials, obstacles



# ETRIKE PLATFORM SCOOTER

Efficient transportation of people and materials in plant logistics and production

**With the eTRIKE Platform Scooter, you can effortlessly cover long distances indoors and outdoors.**

The electric transport and company scooter offers an approved total weight of up to 350 kg thanks to its stable substructure. This corresponds to a payload of approx. 255 kg for the PLS 135 model and approx. 220 kg for the PLS 175.

## ETRIKE PLS 135 AND 175

- Range approx. 40 km, programmable Vmax from 8 to 15 km/h
- Particularly maneuverable and compact: Fits through any door with a width of 800 mm
- Flexible use thanks to configurable transport surface
- No driving license requirement
- Available with road approval for Germany

### More information:

[etrike.fath24.com](http://etrike.fath24.com)



### EXAMPLE APPLICATIONS FOR INDIVIDUAL STRUCTURE

### Find further applications of our customers:

[etrike-scooter.com](http://etrike-scooter.com)



For factory craftsmen at the production site



Mobile workstation in logistics

# FATH PARKING RAILS & FATH GUIDING RAILS

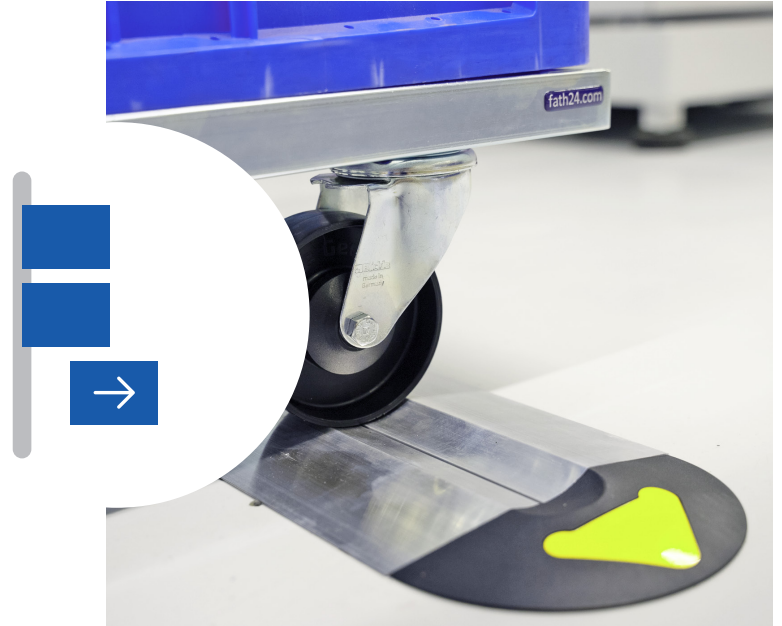
What is the difference?

## FATH PARKING RAILS

FATH Parking Rails are used to lock dollies and trolleys on the shopfloor, without brakes. The rollers of the load carriers are inserted into the recess on one side of the Parking Rail, so that they can be precisely parked, they remain in position. This ensures a safe and orderly material supply. The FATH Parking Rails are simply glued onto the industrial floor.

### More information:

[parking-rail.fath24.com](http://parking-rail.fath24.com)



## FATH GUIDING RAILS

The FATH Guiding Rails are all about movement – they are used for guided and dynamic FIFO material supply with floor rollers and weighing scales. The load carriers are threaded into the FATH Guiding Rails on one side. FATH Guiding Rails are installed floating.

### More information:

[guiding-rail.fath24.com](http://guiding-rail.fath24.com)



# FIFO STATION

Designing to meet requirements and save space

FATH Guiding Rails FIFO work together with FATH dollies to ensure space-saving material supply and an efficient material flow according to the First In-First Out principle.

## FATH GUIDING RAILS

The modular system you can set up your FIFO station with length, width and number of lanes according to your needs and expand it at any time. Using the top profile grooves, 90° angle enclosures can be constructed cost-effectively. The individual Guiding Rail FIFO are screwed together and installed floating. Unbreakable, extra-wide insertion caps enable intuitive threading of the dollies. The single-sided rail guideway saves space, offers additional flexibility, and saves costs.

**More information:**

[guiding-rail.fath24.com](http://guiding-rail.fath24.com)



## FATH DOLLY

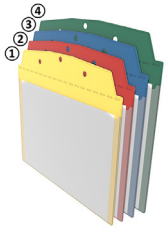
FATH dollies are available in versions for every application: with and without lateral guide, with a drawbar system suitable for towing, and with a load capacity of up to 1000 kg in the version for Euro pallets – and always equipped with Blicke brand wheels. FATH dollies are compatible with standard stock rollers and are also suitable for adapter pallets.

**More information:**

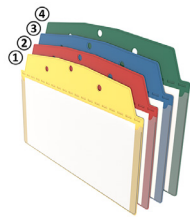
[dolly.fath24.com](http://dolly.fath24.com)



# CONTAINER LABELINGS



ATTACHED VISUAL POCKET  
DIN A5 LANDSCAPE



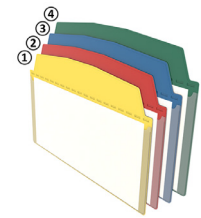
ATTACHED VISUAL POCKET  
1/3 DIN A4 PORTRAIT



ATTACHED VISUAL POCKET  
DIN A4 PORTRAIT



SELF-ADHESIVE VISUAL POCKET  
DIN A5 LANDSCAPE



SELF-ADHESIVE VISUAL POCKET  
1/3 DIN A4 PORTRAIT



SELF-ADHESIVE VISUAL POCKET  
DIN A4 PORTRAIT



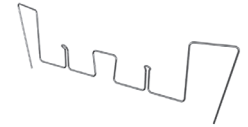
MAGNETIC VISUAL POCKET  
DIN A5 LANDSCAPE



MAGNETIC VISUAL POCKET  
1/3 DIN A4 PORTRAIT



MAGNETIC VISUAL POCKET  
DIN A4 PORTRAIT



SLC WIRE STEEL CLAMP FOR VISUAL  
POCKET



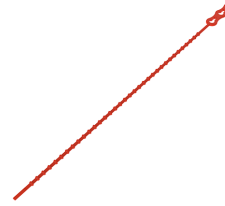
U-LOOP STEEL CLAMP FOR VISUAL  
POCKET



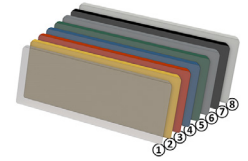
LATTICE BOX CLIP FOR VISUAL POCKET



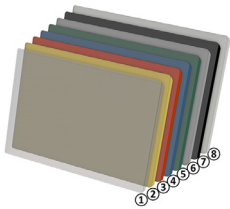
PLASTIC PIN FOR VISUAL POCKET



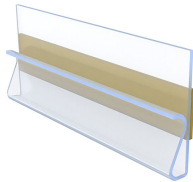
PLASTIC TIE FOR VISUAL POCKET



TOP OPEN KANBAN ENVELOPE



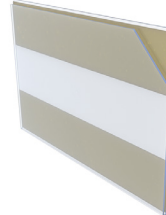
SIDE OPEN KANBAN ENVELOPE



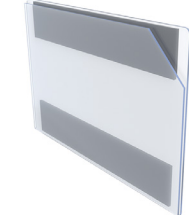
KANBAN CLIP DOCUMENT HOLDER 70 X 30



OVERHANGING KANBAN LABEL HOLDER



SELF-ADHESIVE KANBAN LABEL HOLDER



MAGNETIC KANBAN LABEL HOLDER



## SHELF LABELINGS



SELF-ADHESIVE LABEL HOLDER 20



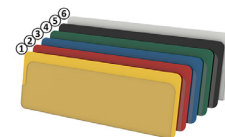
SELF-ADHESIVE LABEL HOLDER 67



MAGNETIC LABEL HOLDER 27



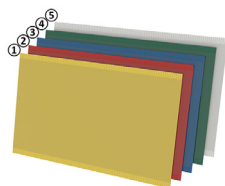
MAGNETIC LABEL HOLDER 47



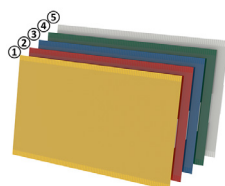
2-SIDES OPEN SELF-ADHESIVE LABEL ENVELOPE 37



2-SIDES OPEN MAGNETIC LABEL ENVELOPE 50

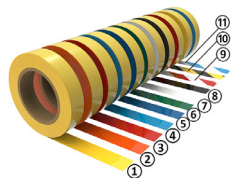


SIDE OPEN SELF-ADHESIVE LABEL ENVELOPES 60



SIDE OPEN MAGNETIC LABEL ENVELOPES 60

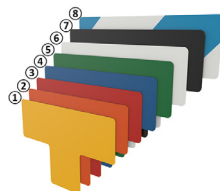
## FLOOR MARKINGS



FLOOR MARKING TAPE



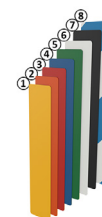
ESD PROTECTED AREA FLOOR MARKING TAPE



FLOOR MARKING T-SHAPE



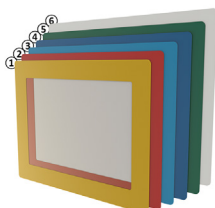
FLOOR MARKING L-SHAPE



FLOOR MARKING I-SHAPE



FLOOR MARKING FOOT SHAPE 90



FLOOR WINDOW DIN A4



NO FORKLIFT TRAFFIC FLOOR SIGN



SAFETY VEST REQUIRED FLOOR SIGN

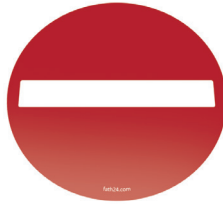


CAUTION FORKLIFT ZONE FLOOR SIGN

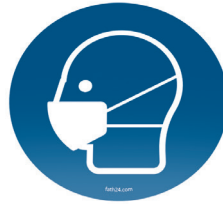
## STICKERS



NO HANDSHAKE STICKER



NO ENTRY STICKER



FACE MASK STICKER



FACE PROTECTION STICKER



DISINFECT HANDS STICKER



WASH HANDS STICKER

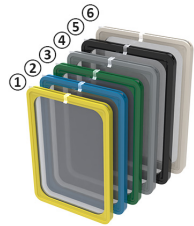


TRAFFIC ARROW STICKER

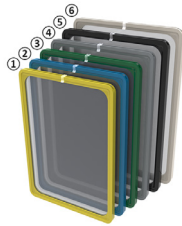


SAFE DISTANCE STICKER

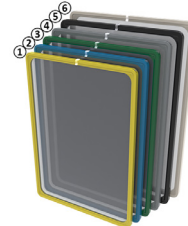
## SIGN HOLDERS



MESSAGE FRAME DIN A5 (SET)



MESSAGE FRAME DIN A4 (SET)



MESSAGE FRAME DIN (SET)



CLOSING CLIP



HANGING HOOK



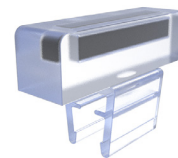
SWIVEL LOOP



S-HOOK



TUBE CLAMP



SWIVEL MAGNET HOLDER



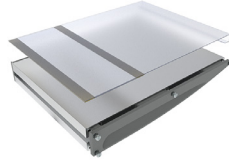
ALUMINUM TUBE (SET)



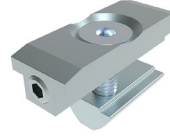
KNOTTED CHAIN



CEILING MAGNET WITH HOOK



SIGN HOLDER AL (SET)



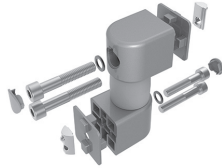
DIRECT CONNECTOR I, SLOT 8



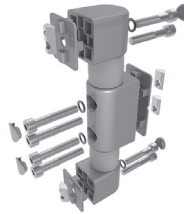
SLOT-ON-SLOT CONNECTOR SOS 18 360°



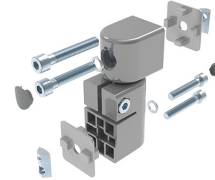
TT-CONNECTOR PLATE D28



FRICTION JOINT 140L FOR SYSTEM ARM (SET)



FRICTION JOINT 180H FOR SYSTEM ARM (SET)



ADJUSTABLE FRICTION JOINT 140L FOR SYSTEM ARM (SET)

## INSERTING SYSTEMS



INSERTING BOX DIN A5 LANDSCAPE



INSERTING BOX 1/3 DIN A4 PORTRAIT



INSERTING BOX DIN A4 PORTRAIT



WINDOW FOR INSERTING BOXES



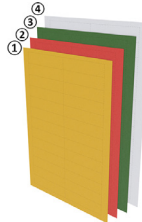
KANBAN WALL BRACKET FOR INSERTING BOXES



WALL FILE POCKET



MAGNET FOR INSERTING SYSTEMS (SET)



LABEL FOR WINDOWS INSERTING BOXES

## VISUAL BOARDS



DIGITAL SHOPFLOOR BOARD



ENAMEL FOLDING BOARD WING WITH DOUBLE FRICTION JOINTS (SET)



WALL-MOUNTED ENAMEL BOARD



MOBILE ENAMEL BOARD



MOBILE WHITEBOARD



MOBILE ENAMEL CUBE



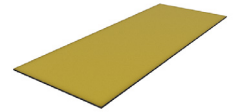
ORGANIZER UTENSILO, MAGNETIC (SET)



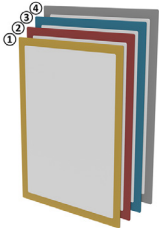
BOARD MARKER WITH FELT ERASER (SET)



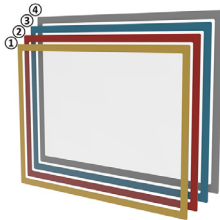
CLEANING SPRAY FOR BOARD MARKER



REFILL FELT PAD FOR ERASER, SELF-ADHESIVE



MAGNETIC DOCUMENT WINDOW DIN A4



MAGNETIC DOCUMENT WINDOW DIN A3



MONITOR WORK STATION SIT / STAND 4-AXIS, PROFILE ATTACHMENT (SET)



MONITOR SUSPENSION ARM SKY 600, HEIGHT ADJUSTABLE WITH LOCKING (SET)



MONITOR SUPPORT 4-AXIS, HEIGHT ADJUSTABLE (SET)



MONITOR SUPPORT 5-AXIS, HEIGHT ADJUSTABLE (SET)



TABLET MOUNT FRAME



MAGNET FOR TABLET MOUNT FRAME (SET)



KEYBOARD HOLDER AL, SLOT 8 (SET)

## MATERIAL TRANSPORT



ETRIKE PLATFORM SCOOTER PLS 135



ETRIKE PLATFORM SCOOTER PLS 175



ETRIKE PLATFORM SCOOTER PLS 135,  
WITH ROAD APPROVAL



ETRIKE PLATFORM SCOOTER PLS 175,  
WITH ROAD APPROVAL



DOLLY FOR SLC 600 X 400, WITH  
4 SWIVEL CASTERS



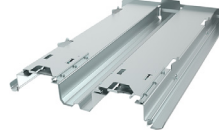
DOLLY FOR SLC 600 X 400, WITH 2 SWIVEL  
AND 2 FIXED CASTERS



DOLLY FOR SLC 800 X 600, WITH 5 SWIVEL  
CASTORS



DOLLY 1200 X 800

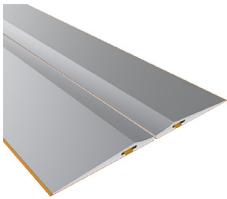


ADAPTER PALLET FOR DOLLIES



EXTRUSION PROFILE PALLET 18

## MATERIAL SUPPLY



PARKING RAIL FLAT - FLAT (SET)



END CAP FOR PARKING RAIL FLAT -  
HIGH (SET)



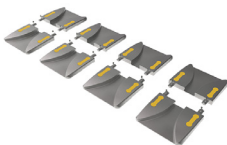
POSITION MARKING END CAP FOR  
PARKING RAIL



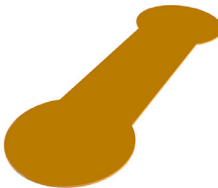
SCREW-ON SET FOR END CAPS PARKING  
RAIL HIGH



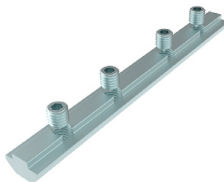
GUIDING RAIL FIFO (SET)



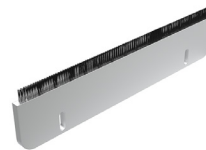
INFEEED CAP FOR GUIDING RAIL FIFO (SET)



SCREW COVER INFEEED CAP FOR GUIDING  
RAIL FIFO



CONNECTING STRIP 140 I, SLOT 8 (SET)



BRUSH BRAKE FOR GUIDING RAIL FIFO



ADJUSTABLE CASTER END STOP FOR  
GUIDING RAIL FIFO (SET)



FIFO MONORAIL RAIL 40



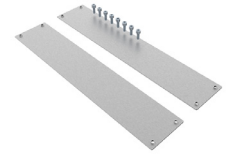
INFEED CAP FOR FIFO MONORAIL RAIL 40 (SET)



FIFO MONORAIL RAIL 55



INFEED CAP FOR FIFO MONORAIL RAIL 55 (SET)



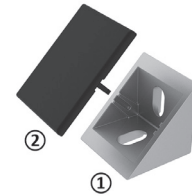
CONNECTING ELEMENT FOR FIFO MONORAIL RAIL 40 AND 55 (SET)



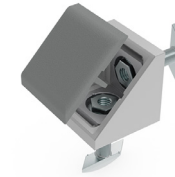
CONNECTING STRIP 180 B, SLOT 8



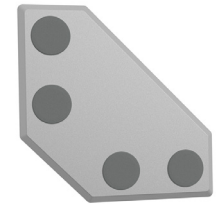
COVER PROFILE SLOT 8 - 2.2



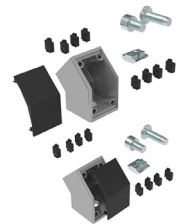
ZINC CONNECTION ANGLE 40 FLAT



ALU CONNECTION ANGLE 140 M LENGTH/ CROSS (SET)



CONNECTION PLATE 1120 M (SET)



MONORAIL ANGLE CONNECTOR FOR POSTS (SET)



AUTOMATIC CONNECTOR STEEL



MILLING CONNECTOR B, SLOT 8

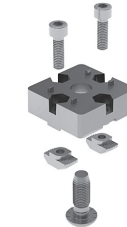
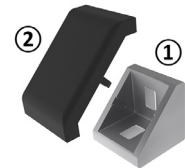


PLATE CONNECTOR B AL (SET)



ALU CONNECTION ANGLE 30

# INTRALOGISTICS AUTOMATION TECHNOLOGY



With the combined expertise of FATH and Flowsort.

Flowsort, a company of the FATH Group and FATH with its expertise in the field of engineering components, offer a wide range of products for efficient material flow on your conveyor system. **Modular, flexible, open system.**

## FLOWSORT DIVERTERS



SPEED FLOW COMPACT DOUBLE LINE SORTING MODUL DLD



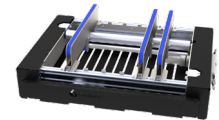
SPEED FLOW COMPACT SINGLE LINE SORTING MODUL SLD



ECO FLOW 1.2 DOUBLE LINE SORTING MODUL DLD

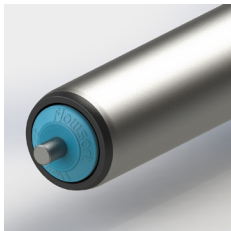


ECO FLOW 1.2 ZIGZAG SORTING MODUL ZZ

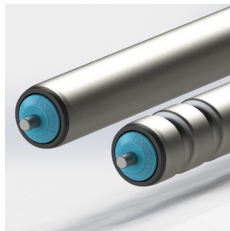


X-FLOW 90

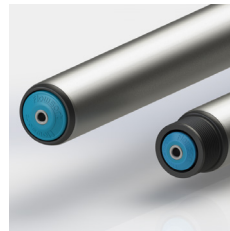
## ROLLERS



GRAVITY ROLLERS



O-BELT GROOVED



POLY-V

More information:

[flow-sort.com](http://flow-sort.com)



## FLOWGUIDE

With FLOWGUIDE you can design your individual lateral guidance for efficient material logistics – optimally perfectly matched to your transported goods and the course of the roller conveyor.

More information:

[flowguide.fath24.com](http://flowguide.fath24.com)



**FATH GmbH**  
Gewerbepark  
Hügelmühle 31  
91174 Spalt  
Germany

P: +49 9175 7909-200  
F: +49 9175 7909-29  
info.de@fath24.com

**FATH Kft.**  
Gyár u. 2  
2040 Budaörs  
Hungary

P: +36 23 880-977  
F: +36 23 880-978  
info.hu@fath24.com

**FATH do Brasil Componentes Industriais Ltda**  
Rua Santa Mônica, 1106  
Parque Industrial San José  
Cotia - SP  
06715 - 865  
Brazil

P: +55 11 2898-9753  
info.br@fath24.com

**Flowsort BV**  
Rudolf Dieselweg 14  
5928 RA Venlo  
The Netherlands

P: +31 850761339  
info@flow-sort.com

**FATH Inc.**  
6533 Hazeltine National  
Drive, Suite 3  
Orlando, FL 32822  
USA

P: +1 407 601-5900  
F: +1 407 601-5905  
info.us@fath24.com

**FATH Components Ltd.**  
6 Pegasus Court, North Lane  
Aldershot  
Hampshire  
GU12 4QP  
Great Britain

P: +44 1252 346610  
info.gb@fath24.com

**FATH BV**  
Rudolf Dieselweg 14  
5928 RA Venlo  
The Netherlands  
  
P: +31 773333555  
F: +31 773333550  
info.nl@fath24.com

**FATH Machine Components (Shanghai) Co., Ltd.**  
Building B5, No. 915 Qian  
Ming East Road  
201501 Jinshan / Shanghai  
PR China

P: +86 21 5774 4520  
info.cn@fath24.com

**FATH Inc. S.A. de C.V.**  
Av. Central 230, Int. 140  
Los Lermas  
67188 Guadalupe, N.L.  
Mexico

P: +52 81 3424-1428  
info.mx@fath24.com

**FATH Schweiz AG**  
Driesbuelstraße 11  
8808 Pfäffikon  
Switzerland

P: +41 79 577 61 97  
info.ch@fath24.com